



## 2013 Big Bass Tournament and 2012 Harvest Rewards

January, 2013 - Vol 32

### In This Issue

More Website Updates

Joke of the Month

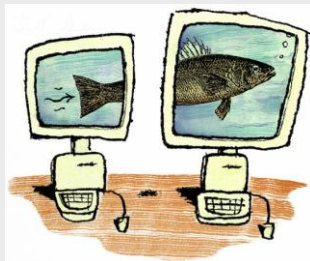
2013 Big Bass Tournament

2012 Harvest Winners

Why Harvest Fish?

### Website Updates:

You may notice a few improvements regarding our website.



We have slightly changed the home page and added a banner listing any important and/or exciting news and club events.

You will also notice a few improvements when placing reservations. For example, additional members attending trips will now also receive the automated

### Big Bass Tournament 2013

Last year Larry Morgan of Oklahoma won all 3 places in the big bass contest. Larry's winning fish was caught at San Saba Waco Creek Ranch and was a 24.5 inch beauty, estimated at 9



lbs. However, this year, you may only win 1st, 2nd or 3rd, not all three; this will forever be known as *"the Larry Morgan rule"*.

confirmation email. The confirmation email now includes all the details you will need for your trip as well as an invoice for accounting purposes. You'll no longer need to take any additional steps to retrieve the details of your outing. However, trip details will always still be available through our website as they have been.

More improvements are just around the corner. Our goal is to continue making our members online PWF experience easier, informative and more enjoyable.

### Current PWF Properties



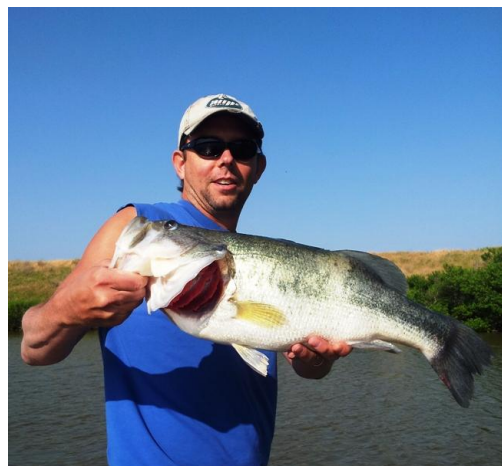
### Joke of the Month: The Pessimist Hunter

An avid duck hunter was in the market for a new bird dog. His search ended when he found a dog that could actually walk on water to retrieve a duck. Shocked by his find, he was sure none of his friends would ever believe him. He decided to try to break the news to a friend of his, the eternal pessimist who refused to be impressed with anything. This, surely, would impress him.



There are a few changes for this year, so please read the entry rules. As you know this is more for bragging rights than a life and death big fish contest.

One other note; there were more than a dozen fish reported bigger than Larry's 9lb fish in 2012, but those folks did not enter the contest or they were caught before or after the contest date.



**Clint Whitlock, 13.2 pounder @  
Bowie Backside of the Moon.**

The largest fish reported to us in 2012 was a 13.2 lb fish caught by Clint Whitlock at Bowie-Back Side of the Moon.

This year's first place winner will be paid **\$500**. Second place pays **\$250** and third place pays **\$100**. Since everyone's scale can weigh a bit different (I have seen them off by more than a pound) we will use length as our determination as a winner. Please bring a "[Check it Stick](#)" or similar with you. Moreover, we will have an identifier that needs to appear in the photo with you. This year's identifier will be a set of clippers or needle nose pliers (basically your fishing

He invited him to hunt with him and his new dog. As they waited by the shore, a flock of ducks flew by. They fired, and a duck fell. The dog responded and jumped into the water. The dog, however, did not sink but instead walked across the water to retrieve the bird, never getting more than his paws wet. This continued all day long; each time a duck fell, the dog walked across the surface of the water to retrieve it. The pessimist watched carefully, saw everything, but did not say a single word.

On the drive home the hunter asked his friend, "Did you notice anything unusual about my new dog?"

Click [here](#) for the punchline

**Not a PWF Member?**

**Sign up today!**

**JOIN PWF**

**Quick Links**

[Original Check It Stick](#)  
[Rapala Tournament Ruler](#)  
[Bass Pro Shops "Check It" Stick](#)

Join Our Mailing List!

View our videos on **YouTube**

line clippers or hook removal device).

**This year's rules will be:**

\*Contest starts Feb 1st 2013 and ends April 30th 2013. (Entries are \$25 per person)

\*All club lakes qualify.

\*A picture of the fish on a "[check it stick](#)" or similar. The fish should be facing left with the mouth closed. Do not pinch tail. Measure to the closest ¼ inch. (Do not use ruler, tape measure etc..)

\*Picture should be sent within 72 hours of your trip.

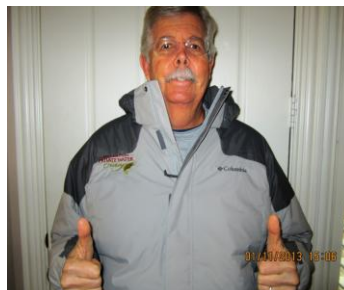
\*Include the unique identifier in the picture (this year it is the pliers).

\*Send a second picture of you holding the fish and let us know how much it weighed. This is not required. Just a nice thing to do.

\*In the event of a tie, the person who paid their contest fee first; wins. Contact the club office by email or by phone to join this years contest. Entries are \$25 per person.

## 2012 Harvest Winners

PWF is again thrilled with the amount of cooperation we have received from our members. We reached our harvests goals at more lakes than ever in 2012. We would like to take this time to reward the two members that helped us the most last year. Both members received a free Columbia Jacket with our club logo on the pocket. Thanks guys! Keep up the good work!



Rick Svoboda earned his club jacket by removing 265 bass at club lakes.



Dale Pybus placed 24 harvest reports. Saving him \$120 in rebates and a free club jacket.

We had so much participation last year that we felt some honorable mentions were in order.

Thank you Members!

#### **Most Bass Removed**

<b><u>Member:</u></b>	<b><u># Removed</u></b>
Gary Guinn	258
Joe Smith	247
John Harvey	195
Dale Pybus	141
Don Altwein	135
Roderick Alford	130
Charles Pyle	119
Zach Millwood	119
Bryan Buchan	116
Jay Reese	111

#### **Most Harvest Reports**

<b><u>Member:</u></b>	<b><u># of Reports</u></b>
Joe Smith	20
Rick Svoboda	20
Don Altwein	19
Keith Robinson	13
Gary Guinn	10
Jay Reese	10
Bill Fetech	10
Brooks McCall	9
Bob Lundin	7
Bryan Buchan	7

## **Why Harvest Fish?**

We realize that for many of you, harvesting fish is a real pain and something you don't want to mess with. We hope you are a team player and will consider the benefits of harvesting fish on club lakes where we are asking you to harvest. PWF will never reach our goals of improving our lakes if we cannot count on your support. Please reconsider the hassle factor and harvest where requested. By the same token NEVER HARVEST FISH WHERE YOU ARE NOT ASKED TO DO SO. The request to harvest appears in the requirements section of each reservation that you make.



99% of private lakes suffer from lack of forage (bait fish) to feed the predator fish (bass). There are simply too many mouths to feed and not enough food in the lake. It is no different than an overgrazed cow pasture. You must thin the herd by adding more food, reducing the number of mouths or both.



**Ambitious Bass with Tilapia**



**Young and hungry....too hungry!**

Food is the single biggest limiting factor in growing big bass. A bass will eat ANYTHING that will fit in their mouth. They have a voracious appetite and are at the top of the food chain in our club lakes.

FYI, we believe in the power of harvesting and offer a \$5.00 rebate for any member



who reports their harvested amount to the club office on a lake where we are currently harvesting fish. Within 24

**Carl Jones' kids helping us harvest at Sulphur Bluff Deer Trail.**

hours of your trip, go to our web-site to the reservation tab. Choose the view/modify/or cancel my reservation link. From here look for the recent reservations and choose "submit harvest report". Fill out the harvest report section. It takes less than 2 minutes and saves a little money. Thank you for believing in the power of harvesting.

We keep a spreadsheet of every reported harvest, tally those amounts and provide an accurate annual accounting to each of our landowners of what you have removed. Why would we spend hundreds of man hours accounting for this, spend thousands of dollars in rebates? Simple, harvesting fish works! We cannot do it without your help! Please, please harvest on lakes where we request your help.

Steve Alexander  
Private Water Fishing